

T1D-DAB The Diversity of Type 1 Diabetes Across Bristol Study

Children Information sheet: 7-11 years

Hello!

We would like to tell you about a study called T1D-DAB that will help us learn more about Type 1 Diabetes.

Introduction What is Type 1 Diabetes?

Type 1 Diabetes happens when

Your body does not make enough insulin.



Our bodies need a special chemical called insulin to change the glucose (sugar) in our food into energy.

Without insulin we can feel...

Tired and unwell

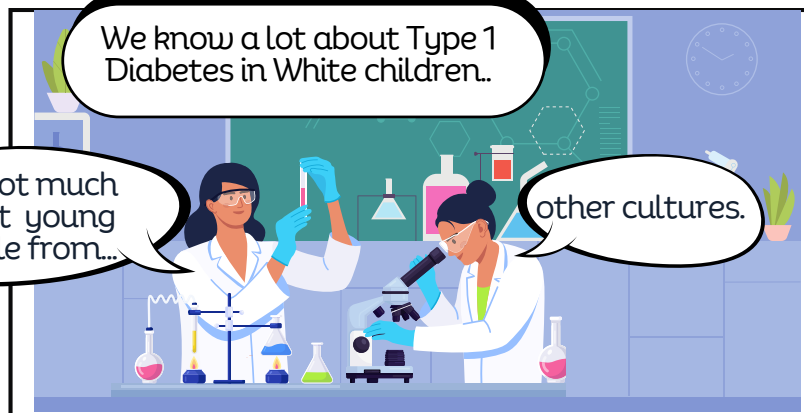
Type 1 Diabetes
No insulin = Low energy.

but not much about young people from...

Why is the T1D-DAB study Important?

We know a lot about Type 1 Diabetes in White children..

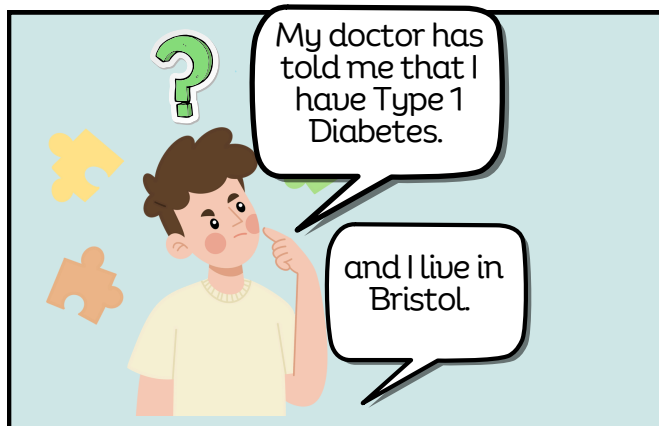
other cultures.



Our study will look at if age and cultural background make a difference in Type 1 Diabetes.

People with Type 1 Diabetes are given insulin injections to help them have more energy.

Why am I being asked to take part?



Your help can make a difference in our understanding of Type 1 Diabetes.

Who can Join T1D-DAB?



We are asking children aged 3-15 years who have Type 1 Diabetes and live in Bristol to take part in our study.

Middle

What would I need to do?

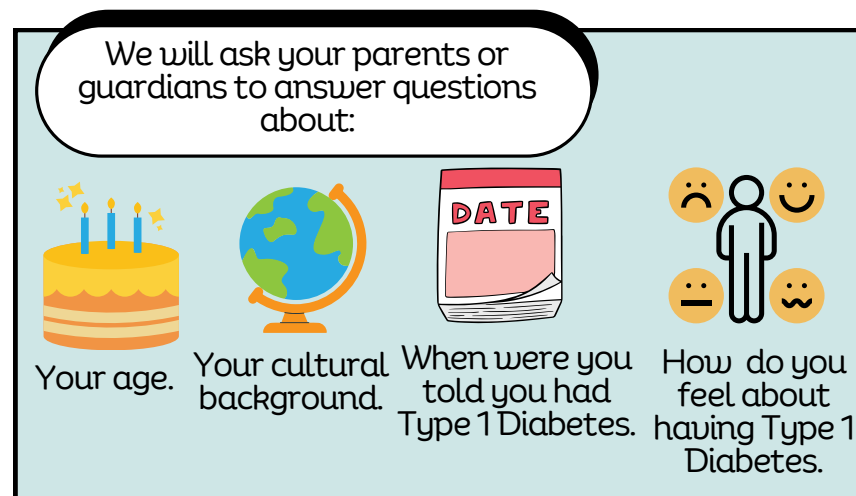
Step 1- Collect samples at Home:



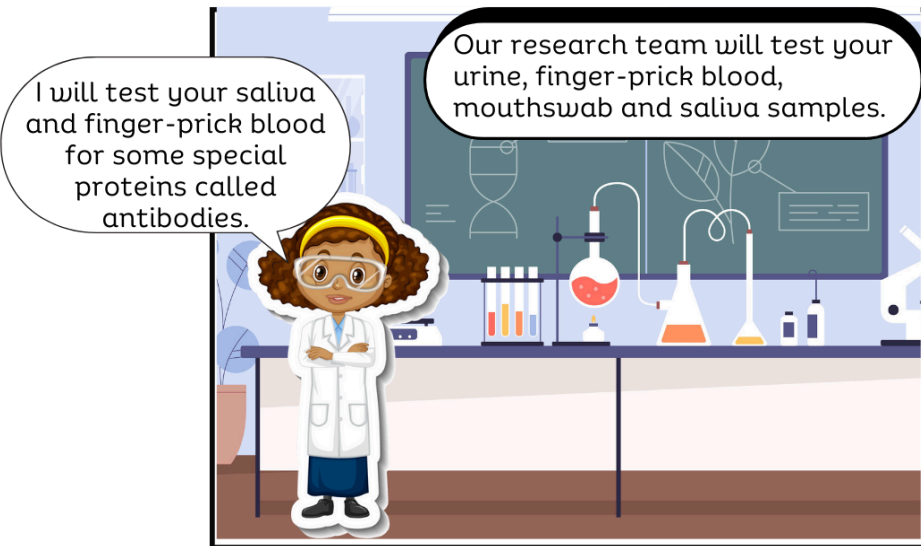
We will post sample collection kits to your home.

The collection kits will also include instructions on how to collect the samples.

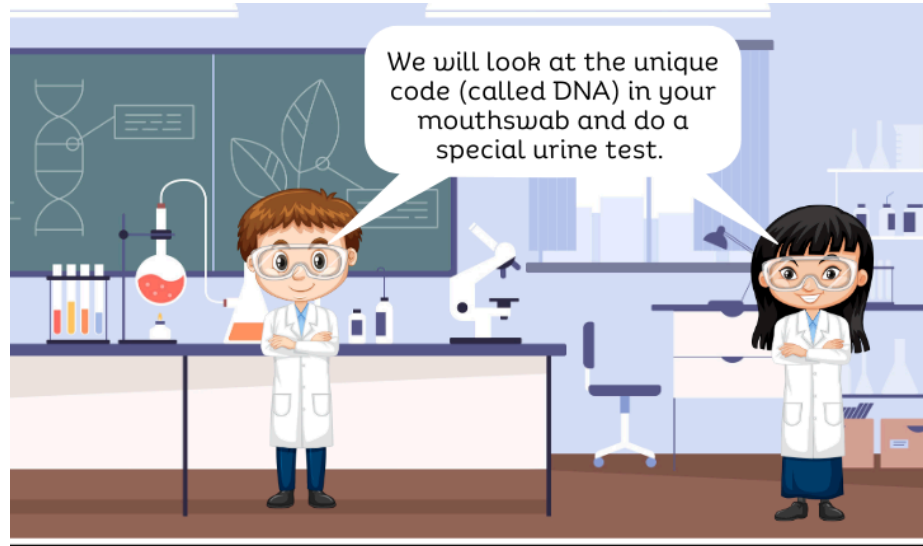
Step 2- Complete Questionnaires:



What is going to happen to my samples?



Antibodies help us to see if there have been any changes to your body's self-defence system.



The information from our study and others could help to create new tests that can tell when someone might get Type 1 Diabetes.

How Can I take Part?



Please talk to your parents or guardians if you want to join the T1D-DAB study.

If your parents or guardians wants the forms by post, please ask them to contact us.

Do I have to take part ?

No, you do not have to take part in T1D-DAB.

I can choose to stop taking part at any time.

If you change your mind about taking part:

Nobody will be upset with you, and your hospital treatment will stay the same.

If you want to stop taking part, ask your parents or guardians to contact Dr. Anna Long, who leads our study.

How do I find more information?

We are happy to answer any questions you or your parents/guardians have.

Please ask your parents or guardians to visit our study website: <https://tinyurl.com/T1D-DABStudyHomepage>

Contact Us:

T1D-DAB

Address:
Diabetes & Metabolism
Level 2, Learning and Research
Building
Southmead Hospital
Bristol BS10 5NB

T1D-DAB

Email: diabetes-study@bristol.ac.uk

Telephone Number: 0117 414 7915

Thank you for reading this!